



Overview of building from southeast



Overview of building from north



Overview of building from southwest



Backerboards installed for exterior electrical panels/meter





GSI Tank excavation



Overview of apparatus bay from north



South side of apparatus bay

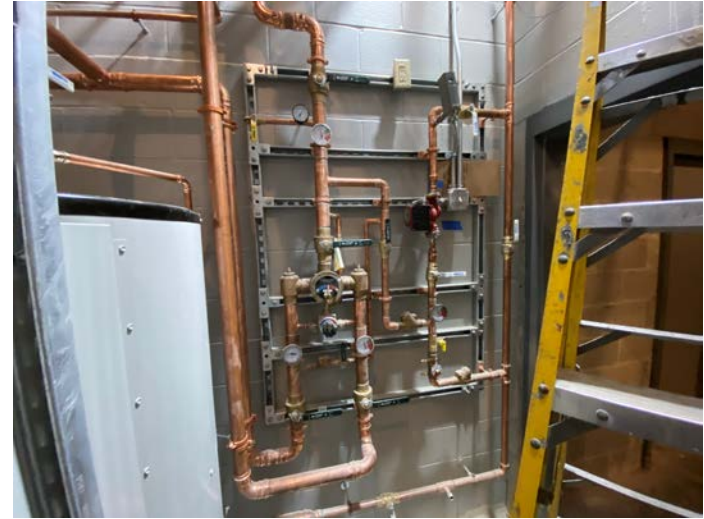


Mechanical room





Mechanical room



Mechanical room



Acoustical ceiling grid installation in day room



Soffit installation at vestibule. Pipes/electrical to be re-located as necessary to go above ceiling.